

Europe – A benefit for Hamburg

The European Social Fund in the Free and Hanseatic City of Hamburg

Thanks to its convenient geographical location in the heart of Europe, Hamburg is profiting economically from the European integration. The prosperity of the Hanseatic city is to a considerable extent due to the European Single Market.

At the same time, Hamburg is confronted with the typical challenges of a major city. Topics such as the integration of immigrants and refugees, long-term unemployment and securing a skilled workforce are on the agenda. In order to meet the requirements of labour market, social and education policies, the Hamburg Senate also deploys funds provided by the European Union: the European Social Fund, or ESF for short.

The ESF funding is used in consultation with the European Commission according to regional needs.

Contacts

If you have any questions, the Ministry of Labour, Social and Family Affairs and Integration will be pleased to advise you. For all general enquiries relating to the European Social Fund, please contact:

Mr. Martin Weber (Head of Unit)
phone: +49(0)40 428 63 3995
e-mail: martin.weber@basfi.hamburg.de

For all matters relating to ESF public relations please contact:

Ms. Nora Obenaus
phone: +49(0) 428 63 3650
e-mail: esf-pr@basfi.hamburg.de

For all matters relating to ESF transnational cooperation please contact:

Mr. Ulrich Wolff
phone: +49(0) 428 63 3229
e-mail: ulrich.wolff@basfi.hamburg.de

For further information about the ESF in Hamburg, please visit: www.esf-hamburg.de

This publication may not be used by political parties or election campaigners for campaigning purposes during elections. It may also not be used in any manner which could be considered as showing partisanship for any single group, even if not within the context of a forthcoming election. Political parties are, however, permitted to use the publication to inform their own members.



EUROPEAN SOCIAL FUND ESF
SEIZING OPPORTUNITIES,
SAFEGUARDING EMPLOYMENT!

In the current funding period 2014 to 2020 the European Social Fund ESF is supporting labour market, social and educational policies in Hamburg.

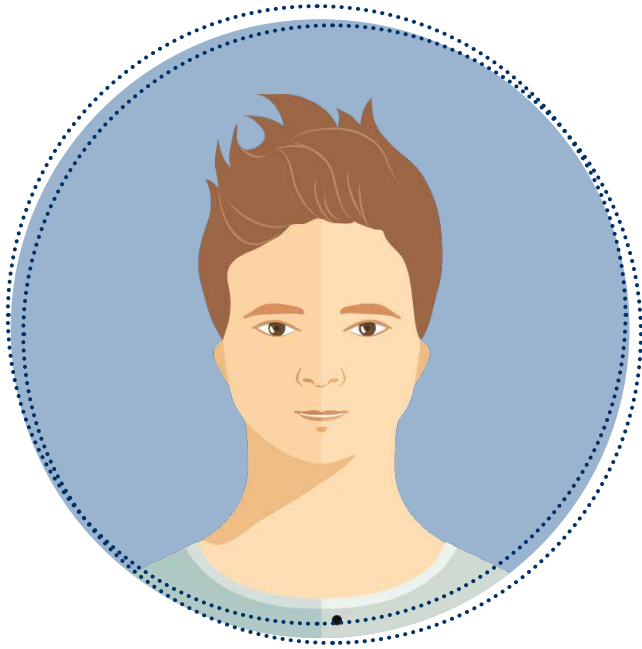


European Union

European Social Fund ESF
Seizing opportunities, safeguarding employment!



Ministry of Labour,
Social and Family Affairs
and Integration



Markus' story

One of 45 000

At the age of 14*, he lost his parents due to a car accident, got off the rails and missed his graduation. Social workers of a project supported by the ESF obtained his confidence and jointly developed a plan for his educational and professional future. Thanks to the personal support at visits to youth and welfare services, he managed to find a residential group. At the age of 19 Markus finally passed his high school exam and can now plan his own future.

*Markus is just one example of the total of 45000 Hamburg citizens who will benefit from the ESF projects by 2020.

Supporting Hamburg's strategies

Better prospects thanks to education and employment

The ESF's engagement in Hamburg contributes significantly to the implementation of existing strategies and plans by the Hamburg parliament and the Senate.

Some 25 percent of ESF funding is invested in projects such as the one to help people like Markus. "come in"; "YOUTH ACTIVE PLUS" and "CatchUp – Psychological support" are just three of the projects which provide individual assistance to young people (aged 16 – 24) who are not in employment, education or training (NEET) in order to place them in apprenticeships and jobs, thus boosting youth employment and supporting the objectives of the Youth Employment Agency in Hamburg.

Qualified women are a further focus group, receiving tailor-made support with their career planning from programmes such as "Pro Exzellenzia 4.0" and "Work/Life – re-entry with a future". Within the scope of projects such as "Jobclub Soloturn Plus" and the "ServiceCenter dual vocational training in part time" single parents are able to benefit from advisory and support services designed to help them participate in work.

Hamburg's strategy to secure a skilled workforce receives support from projects such as the "4th Hamburg Qualification Campaign in Geriatric Nursing" or the "comprehensive recruitment of young people for training in the crafts sector".

Last but not least, projects such as "Opportunities in the Safe Haven Hamburg Plus" and "Opportunity generator" accompany the Senate's efforts to provide refugees with employment prospects, bundled within the "work and integration for refugees – W.I.R." programme.

For an overview of all projects supported by the ESF and the Free and Hanseatic City of Hamburg, please visit www.esf-hamburg.de.

The current funding period

Investment in the city's people

In the current funding period 2014 to 2020, the EU and the city of Hamburg will invest €75 million each in innovative projects.

A total of around 150 million euros is targeted to young people, women, jobseekers, people with disabilities, refugees and people with a migration background to sustainably improve their employment situation.

In Hamburg, ESF funds are allocated through transparent public calls, organized by the Ministry of Labour, Social and Family Affairs and Integration. Usually, ESF projects are funded for 3 to 4 years. During this period, the implementation of the individual projects is supported and monitored by the ESF Managing Authority.

